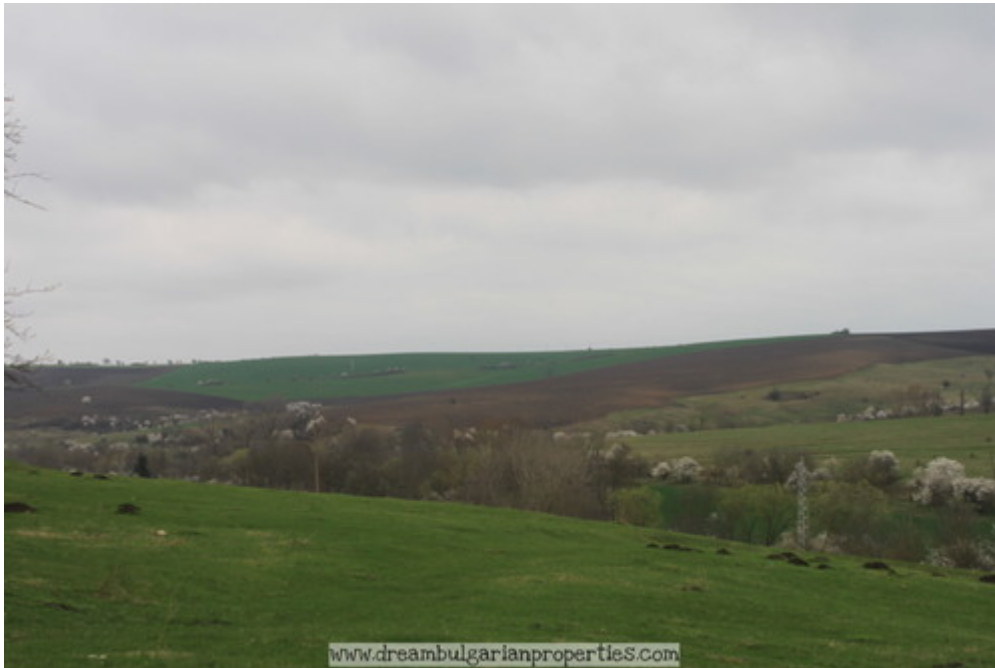


Blossom Hill Split Level Bungalow



Details at a glance

- Palamartsa
- Asking price: BGN15,000.00
- **Key features of this property**

◦

- *Would suit a couple or small family
- *Stunning edge of village location
- *Beautiful Panoramic views from all aspects
- *Lots of outbuildings, suitable for chickens, pigs, goats, rabbits etc.
- *Large Barn.
- *Split level bungalow with conservatory and double door entrances.
- *Two Large bedrooms and Small Box Room, plus Large Entrance Hallway on upper level.
- *Lower level comprises, conservatory entrance, current kitchen and living room.
- *Possibility to connect two halves of house with small internal stairs.
- *Large 2000 sq meter land area.
- * Garage
- *Wood store and tool store.
- *Two sets of Double and Single Gated entrances to house and courtyard.
- *Established Grapevines, Flower Garden, Fruit and Nut Trees.
- *All wooden floors on upper level.
- *Very solid house, just requires modernising and a small amount of renovation.
- *Does not include the horse or dog!!